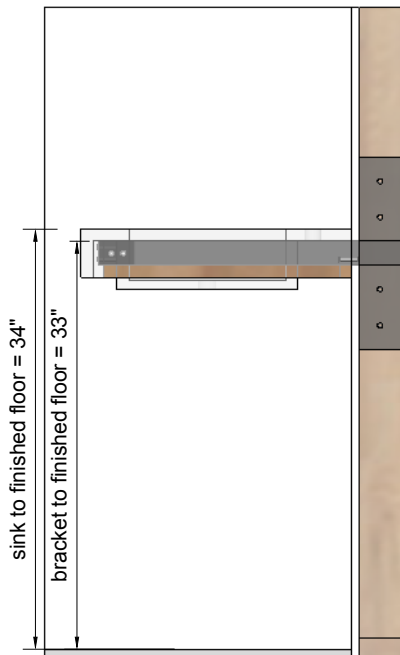
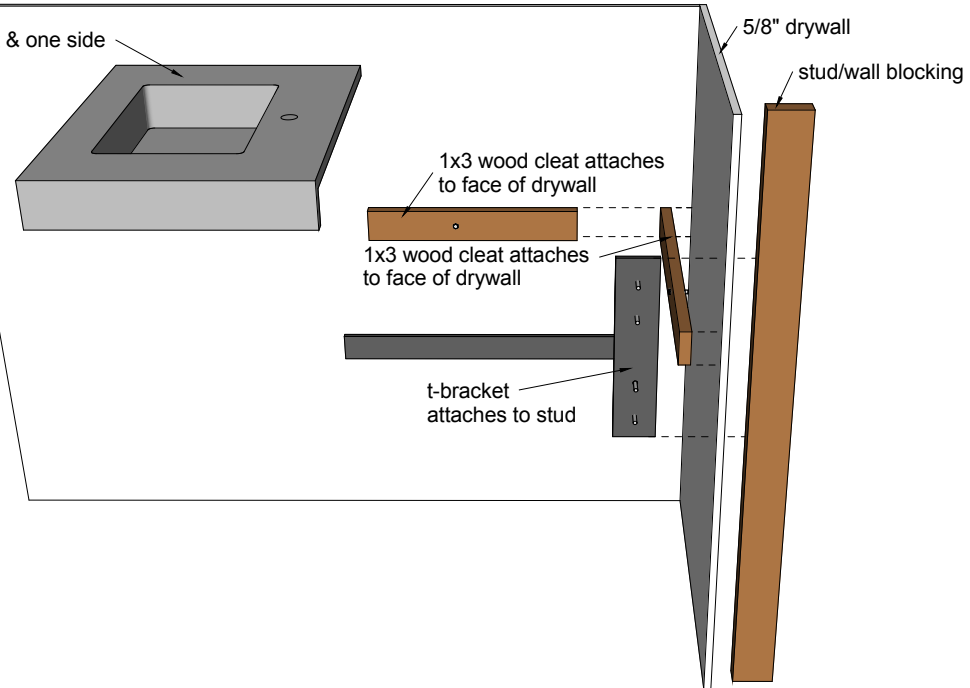
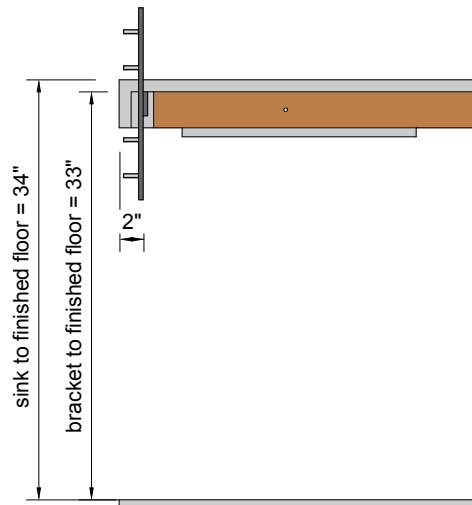


Detail of recommended T-bracket  
(assuming a standard 22-1/2" counter depth)

Cement Elegance counter/sink-  
1" field thickness with drop edge on front & one side



Side view showing recommended height to mount T-bracket



Back view showing placement of T-bracket

**Mounting Suggestions for Corner Wall Mount Sinks under 72" long**  
**Model #: CWM kit (for ordering purposes)**  
**\*kit includes 1 t-bracket & 2 wood cleats**