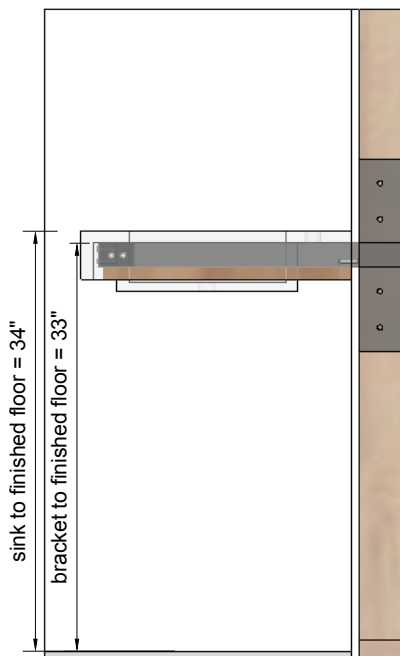
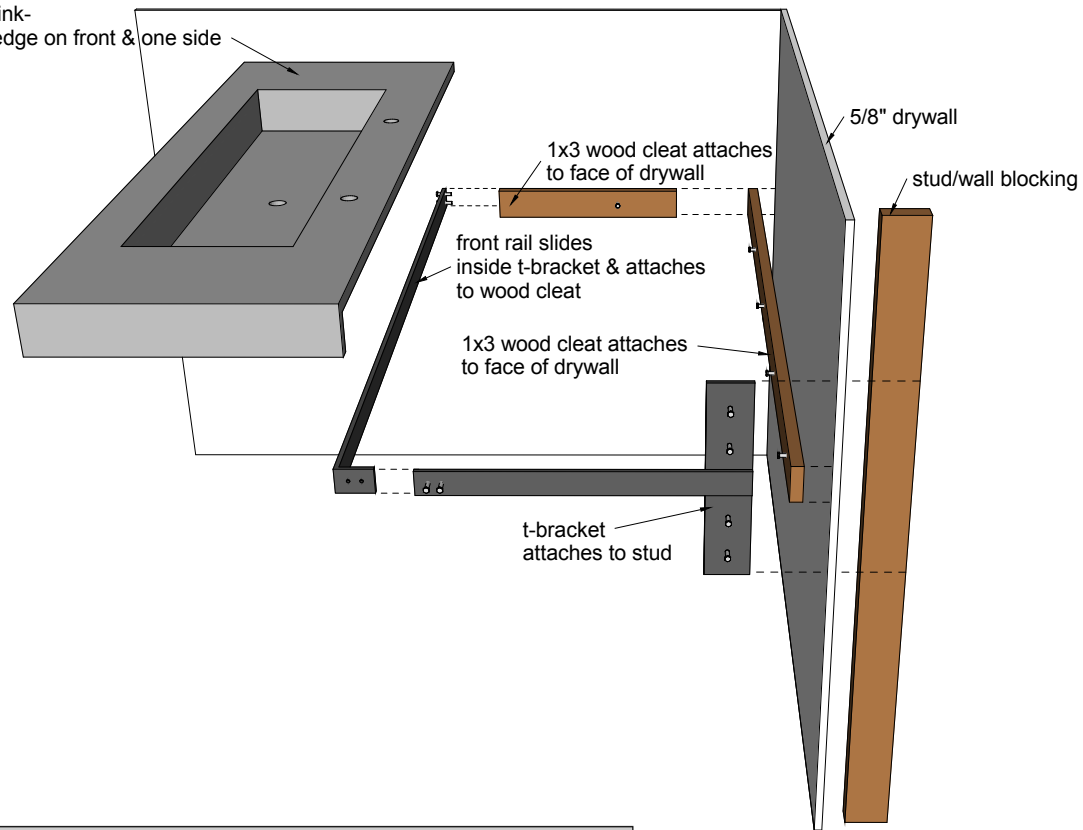


Detail of recommended T-bracket (assuming a standard 22-1/2" counter depth)

Cement Elegance counter/sink-  
1" field thickness with drop edge on front & one side



Side view showing recommended height to mount T-bracket



Back view showing placement of T-bracket

**Mounting Suggestions for Corner Wall Mount Sinks 72" - 108" long**  
**Model #: CWM72108 kit (for ordering purposes)**  
**\*kit includes 1 t-bracket, 1 front rail, & 2 wood cleats**